

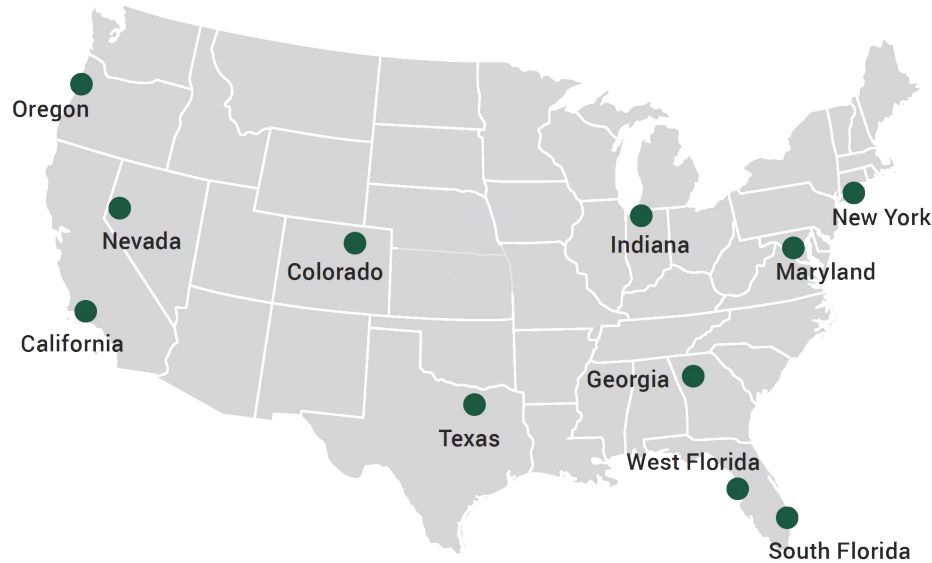


A valmont TELECOM COMPANY

valmont 
TELECOM

AT&T Approved Mounts

2023



New York

15 Oser Ave
Hauppauge, NY 11788
Ph: 1-888-438-7761

Georgia

4100 Westpark Dr SW, Ste C
Atlanta, GA 30336
Ph: 1-866-901-0603

California

12661 Corral Pl
Santa Fe Springs, CA 90670
Ph: 1-888-776-1937

Indiana

1545 Pidco Dr
Plymouth, IN 46563
Ph: 1-888-753-7446

West Florida

5122 Joanne Kearney Blvd
Tampa, FL 33619
Ph: 1-844-278-6371

Maryland

8200 Stayton Drive, Ste 700
Jessup, MD 20794
Ph: 1-888-438-7761

Oregon

3573 25th St SE
Salem, OR 97302
Ph: 1-888-880-9191

Texas

2045 Westgate Dr, Ste 110
Carrollton, TX 75006
Ph: 1-888-809-5151

South Florida

33 Commerce Way
Jupiter, FL 33458
Ph: 1-866-781-1300

Nevada

960 E Greg St. Building 6
Sparks, NV 89431
Ph: 1-888-438-7761

Colorado

14200 E 35th Pl Ste 105
Aurora, CO 80011
Ph: 1-720-823-7661

We're the backbone of the wireless industry.

Serving wireless carriers, contractors, and integrators for nearly two decades, we are telecom's premier manufacturer and distributor of wireless site components.

Our nationwide warehouses are fully stocked and strategically located around the U.S. to facilitate the immediate shipment of your order. With the addition of our latest locations, we reach 99% of the U.S. within a single day.

Everything we do is with our customers in mind, and providing an optimal experience is our top priority. Whether purchasing through our knowledgeable customer service team or our fast and secure website online, we guarantee that you will have a first-class experience.

Shop online at SitePro1.com

For engineering information, you may request an account at SP1Data.com

If you need technical assistance or have questions on what to specify, please email our engineering team at SP1Engineering@Valmont.com

For quote requests, please email our team at SP1SalesGroup@valmont.com

Valmont Telecom Locations

Indiana

Plymouth, IN

Oregon

Salem, OR

Nebraska

Valley, NE

Texas

Brenham, TX

Arizona

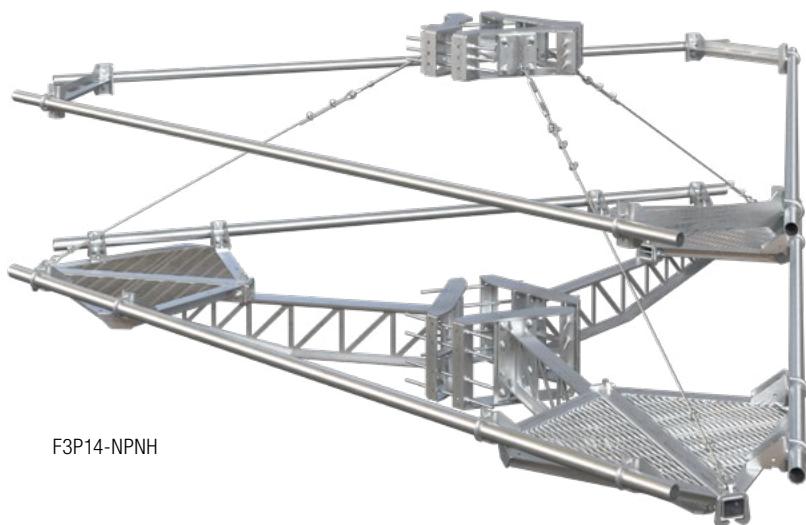
Tucson, AZ

Colorado

Colorado Springs, CO

AT&T Approved Platforms

3-Sided Fortress™ Platforms



F3P14-NPNH

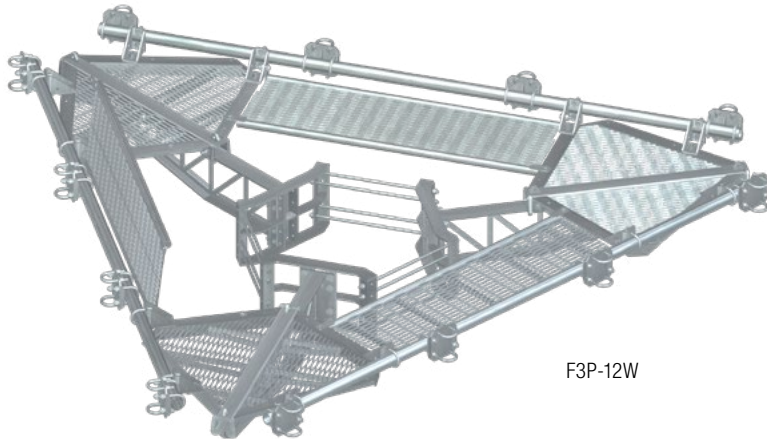
Description

- All designs feature our Fortress™ mount - the strongest single level platform on the market
- Upper support rail included with each assembly
- Additional ring mount reinforcement included with 14' platform (Available upon request for other sizes with CRK-DC3)
- Mounting pipes and crossovers ordered separately
- Contact us for detailed loading and engineering information

CEQ#	OEM P/N	Classification	Description	Antenna Pipe (QTY) & Size	Weight
ANT.55980	F3P10-NPNH	M1500R(1300)-4[6]	10' Fortress 3-Sided Platform (No Pipe/Hardware)	Order Separately	1,778 lb
ANT.56007	F3P12-NPNH	M1500R(1300)-4[6]	12' Fortress 3-Sided Platform (No Pipe/Hardware)	Order Separately	1,889 lb
ANT.56011	F3P14-NPNH	M1500R(1300)-4[6]	14' Fortress 3-Sided Platform with Cable Reinforcement (No Pipe/Hardware)	Order Separately	3,889 lb
ANT.56449	SCX3-FR-K		Crossover for 2-3/8" or 2-7/8" Mounting pipes (Two per Pipe)		17 lb
ANT.55983	P296		2-3/8" x 96" SCH 40 Mounting Pipe		30 lb
ANT.55993	P2120		2-3/8" x 120" SCH 40 Mounting Pipe		37 lb
ANT.55985	P3096		2-7/8" x 96" SCH 40 Mounting Pipe		47 lb
ANT.16008	P30120		2-7/8" x 120" SCH 40 Mounting Pipe		58 lb

AT&T Approved Platforms

Fortress™ Full Walkways and Support Rails



F3P-12W

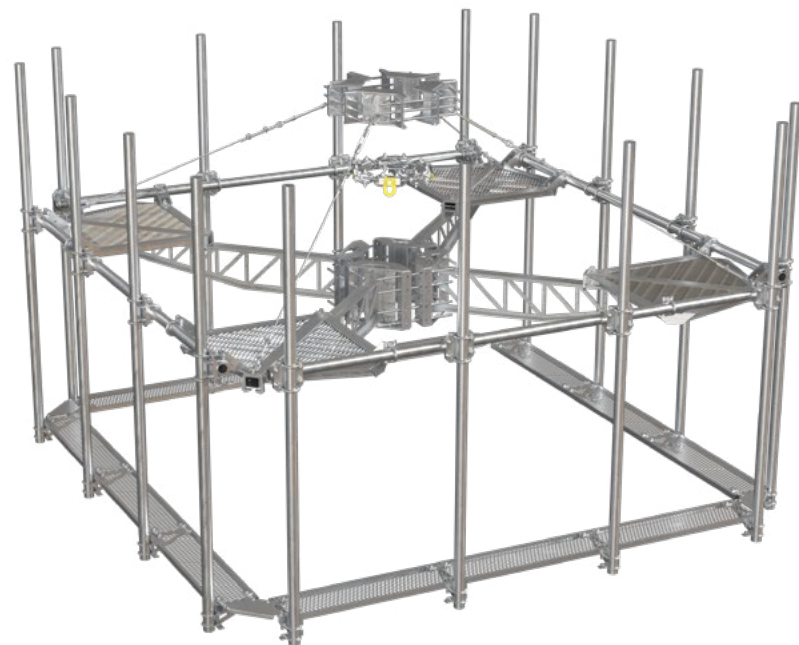
Description

- Features our Fortress™ mount - the strongest single level platform on the market
- Upper Support Rail available separately
- Mounting pipes ordered separately
- Includes 12 crossover kits for mounting pipes
- Contact us for detailed loading and engineering information

CEQ#	OEM P/N	Classification	Description	Antenna Pipe (QTY) & Size	Weight
ANT.56698	F3P-12W	M1550R(1100)-4[6]	12' Fortress 3-Sided Platform with Full Walkway	Order Separately	2,123 lb
CEQ.53336	F3P-HRK10		Support Rail Kit for 10' Fortress 3-Sided Platform	Order Separately	391 lb
CEQ.53318	F3P-HRK12		Support Rail Kit for 12' Fortress 3-Sided Platform	Order Separately	406 lb
ANT.55983	P296		2-3/8" x 96" SCH 40 Mounting Pipe		30 lb
ANT.55993	P2120		2-3/8" x 120" SCH 40 Mounting Pipe		37 lb
ANT.55985	P3096		2-7/8" x 96" SCH 40 Mounting Pipe		47 lb
ANT.16008	P30120		2-7/8" x 120" SCH 40 Mounting Pipe		58 lb

AT&T Approved Platforms

12' 4-Sided Fortress™ Platform



F4P-12-H10

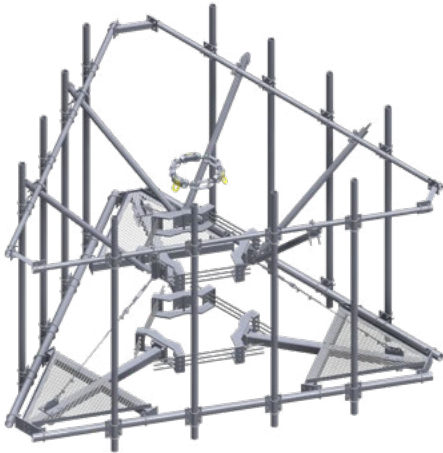
Description

- Utilizes our Fortress™ mount - the strongest single level platform on the market
- Full walkway provided below the mount
- Monopole mounting range: 12" - 60"
- Includes 2-7/8" antenna mounting pipes
- Includes Halo™ mount
- Contact us for detailed loading and engineering information

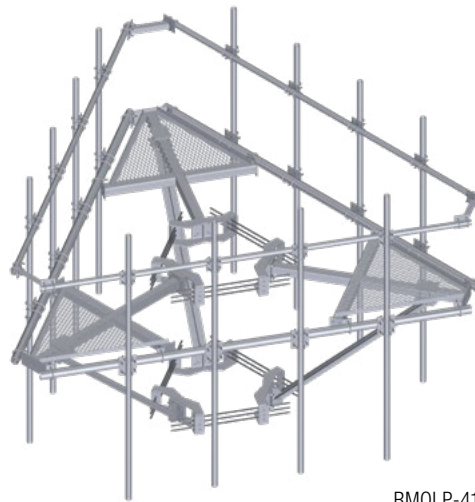
CEQ#	OEM P/N	Classification	Description	Antenna Pipe (QTY) & Size	Weight
ANT.46149	F4P-12-H10	M1550R(1350)-4[0]	12' 4-Sided Platform with Hanging Walkway	(12) 2-7/8" x 120" SCH 40	4,210 lb
CEQ.53327	F4P-HRK12		Support Rail Kit for 12' Fortress 4-Sided Platform		508 lb

AT&T Approved Platforms

14' 3-Sided Platforms (Heavy-10)



RMQLP-4120-H10



RMQLP-4126-HK

Description

RMQLP-4120-H10

- 14' 3-Sided platform with cable reinforcement kit
- Monopole mounting range: 12" - 45"
- Includes Halo™ mount
- Includes 2-7/8" antenna mounting pipes
- Contact us for detailed loading and engineering information

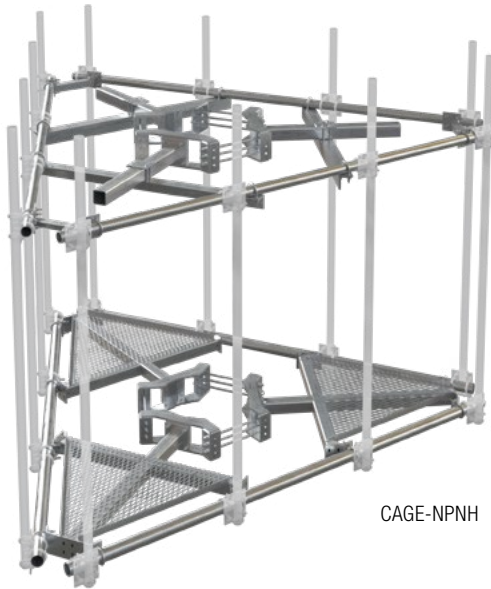
RMQLP-4126-HK

- Heavy-duty design to safely support multiple RRU's plus 12 antennas
- Second ring mount below adds additional support
- Integral handrails provide added strength and easy antenna and RRU mounting as well as worker safety
- Includes 2-7/8" antenna mounting pipes
- Contact us for detailed loading and engineering information

CEQ#	OEM P/N	Mount Rating	Description	Antenna Pipe (QTY) & Size	Weight
ANT.44987	RMQLP-4120-H10	M1309R(1325)-4[0]	14' 3-Sided Platform Frame	(12) 2-7/8" x 120" SCH 40	3,250 lb
ANT.55229	RMQLP-4126-HK	M2050R(2500)-4[6]	14' 3-Sided Platform Frame with Reinforcement Kickers	(12) 2-7/8" x 126 SCH 40	2,736 lb

AT&T Approved Platforms

CAGE™ Platforms



CAGE-NPNH

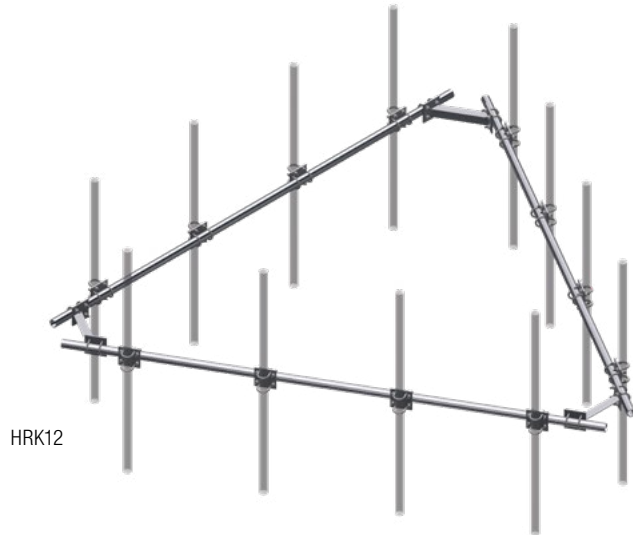
Description

- Dual level reinforced platform
- Monopole mounting range: 12" - 45"
- Specify RM-ADK for monopoles 45" - 60"
- Mounting pipes and crossovers ordered separately
- Contact us for detailed loading and engineering information

CEQ#	OEM P/N	Classification	Description	Antenna Pipe (QTY) & Size	Weight
ANT.55989	SNP10-NPNH	M1500R(1300)-4[6]	10' - 6" Snub Nose Platform with Reinforced Support Rail (No Pipe/Hardware)	Order Separately	2,528 lb
ANT.55964	CAGE-NPNH	M1300R(1300)-4[6]	12' - 6" Low Profile Platform with Reinforced Support Rail (No Pipe/Hardware)	Order Separately	2,150 lb
ANT.55973	CAGELP-NPNH	M1300R(1300)-4[6]	14 - 6" Low Profile Platform with Reinforced Support Rail (No Pipe/Hardware)	Order Separately	2,346 lb
CEQ.53317	SCX2-K		Crossover Kits for 2-3/8" OD Mounting Pipes (Two per pipe)	2-3/8"	9 lb
ANT.55975	SCX23-K		Crossover Kits for 2-7/8" OD Mounting Pipes (Two per pipe)	2-7/8"	9 lb
ANT.55983	P296		2-3/8" x 96" SCH 40 Mounting Pipe		30 lb
ANT.55993	P2120		2-3/8" x 120" SCH 40 Mounting Pipe		37 lb
ANT.55985	P3096		2-7/8" x 96" SCH 40 Mounting Pipe		47 lb
ANT.16008	P30120		2-7/8" x 120" SCH 40 Mounting Pipe		58 lb
ANT.55979	RM-ADK		Large Pole Adapter (Two needed for 45" to 60" Monopoles)		106 lb

AT&T Approved Support Rail Kits

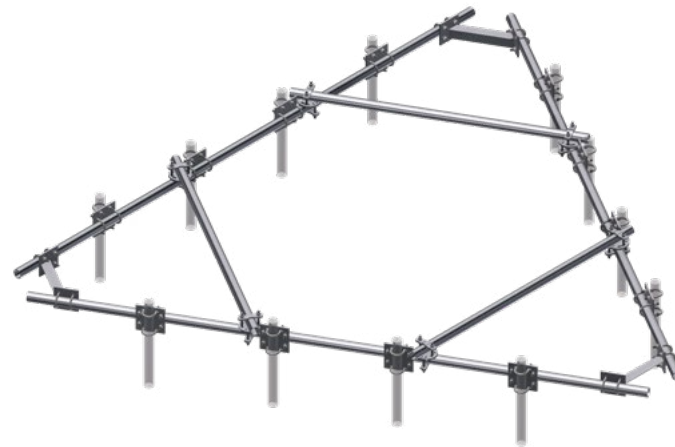
Universal Platform Handrail Kits



HRK12

Description

- Use to add handrails and antenna pipe support to existing platforms
- Universal design works for a wide variety of platforms
- Order antenna mounting pipes separately

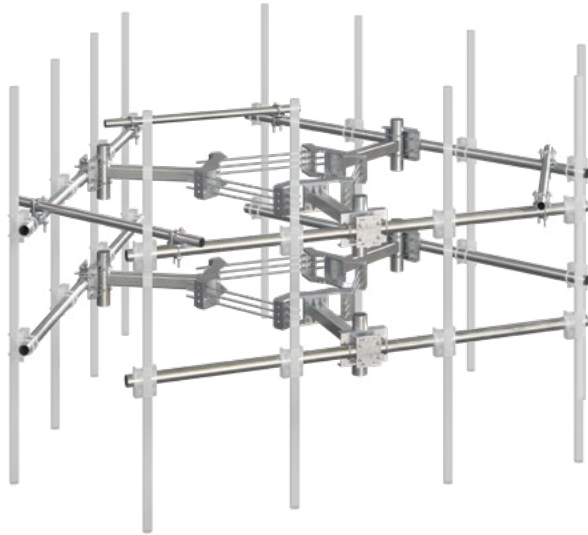


HRK12-HD

CEQ#	OEM P/N	Face Width	Support Rail Pipe Size	Antenna Mounting Pipe Size	Corner Brace	Weight
ANT.51653	HRK12	12'-6"	2-3/8" OD x 150" SCH 40	2-3/8"	No	273 lb
ANT.51648	HRK12-U	12'-6"	2-3/8" OD x 150" SCH 40	2-3/8" or 2-7/8"	No	302 lb
ANT.51651	HRK12-HD	12'-6"	2-3/8" OD x 150" SCH 40	2-3/8" or 2-7/8"	Yes	407 lb
ANT.51649	HRK12-3HD	12'-6"	2-7/8" OD x 150" SCH 40	2-3/8" or 2-7/8"	Yes	503 lb
ANT.51647	HRK14	14'-6"	2-3/8" OD x 174" SCH 40	2-3/8"	No	303 lb
ANT.51654	HRK14-U	14'-6"	2-3/8" OD x 174" SCH 40	2-3/8" or 2-7/8"	No	332 lb
ANT.51656	HRK14-HD	14'-6"	2-3/8" OD x 174" SCH 40	2-3/8" or 2-7/8"	Yes	449 lb
ANT.51657	HRK14-3HD	14'-6"	2-7/8" OD x 174" SCH 40	2-3/8" or 2-7/8"	Yes	525 lb

AT&T Approved T-Arms

Dual Level T-Arms



RMVD12-NPNH

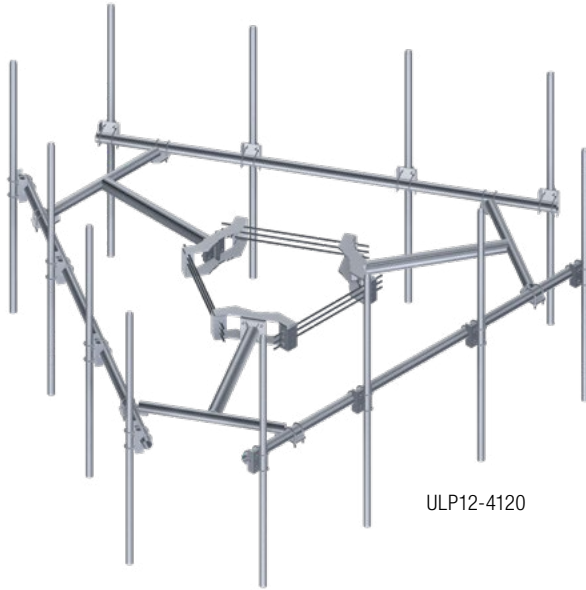
Description

- Dual level ring mount for high strength applications
- Tie-backs between adjacent sectors add additional reinforcement
- Attaches to monopoles from 12" - 45"
- Specify RM-ADK monopoles from 45" - 60"
- Mounting pipes and crossovers ordered separately
- Contact us for detailed loading and engineering information

CEQ#	OEM P/N	Classification	Description	Antenna Pipe (QTY) & Size	Weight
ANT.55987	RMVD10-NPNH	M1300R(1300)-4[6]	10' Dual Level T-Arm (No Pipe/Hardware)	Order Separately	1,807 lb
ANT.55970	RMVD12-NPNH	M1300R(1300)-4[6]	12' Dual Level T-Arm (No Pipe/Hardware)	Order Separately	1,897 lb
ANT.55974	SP219		3-1/2" - 2-3/8" Crossover (Two per pipe)	2-3/8"	13 lb
ANT.55968	SP219-H		3-1/2" - 2-7/8" Crossover (Two per pipe)	2-7/8"	13 lb
ANT.55983	P296		2-3/8" x 96" SCH 40 Mounting Pipe		30 lb
ANT.55993	P2120		2-3/8" x 120" SCH 40 Mounting Pipe		37 lb
ANT.55985	P3096		2-7/8" x 96" SCH 40 Mounting Pipe		47 lb
ANT.16008	P30120		2-7/8" x 120" SCH 40 Mounting Pipe		58 lb
ANT.55979	RM-ADK		Large Pole Adapter (Two needed for 45" - 60" Monopoles)		106 lb

AT&T Approved T-Arms

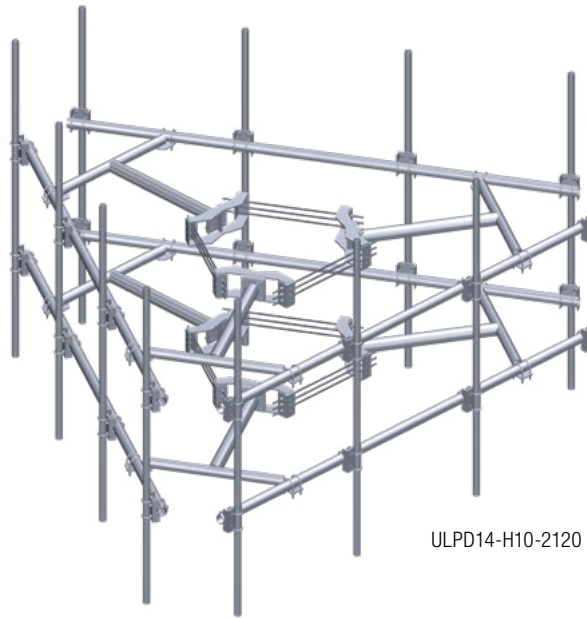
Reinforced T-Arm Assemblies



ULP12-4120

Description

- All round members for reduced EPA
- Light weight, 5' T-shaped frame
- Monopole mounting range: 12" - 45"
- Specify RM-ADK for monopoles from 45" - 60"
- Includes 2-3/8" antenna mounting pipes
- Contact us for detailed loading and engineering information



ULPD14-H10-2120

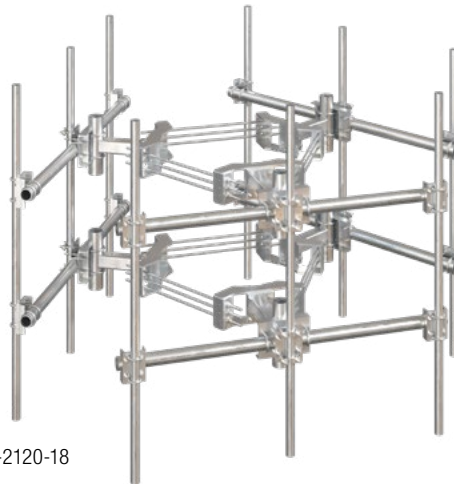
CEQ#	OEM P/N	Classification	Description	Antenna Pipe (QTY) & Size	Weight
ANT.16966	ULP12-4120	M1600R(1300)-4[6]	12' Ultra Low Profile 3-Sided T-Arm Mount	(12) 2-3/8" x 120" SCH 40	1,521 lb
CEQ.53322	ULPD14-H10-2120	M1600R(1300)-4[6]	14' Dual Level Ultra Low Profile Rigid T-Arm	(12) 2-3/8" x 120" SCH 40	2,530 lb
ANT.55979	RM-ADK		Large Pole Adapter		106 lb

AT&T Approved T-Arm Mounts

Short T-Arms for Concealment Purposes



RMV5-3-2120



RMVD-8-2120-18

Description

RMV5

- Light weight, 5' T-shaped frame
- Monopole mounting range: 12" - 45"
- Specify RM-ADK for monopoles from 45" - 60"
- Includes 2-3/8" antenna mounting pipes
- Contact us for detailed loading and engineering information

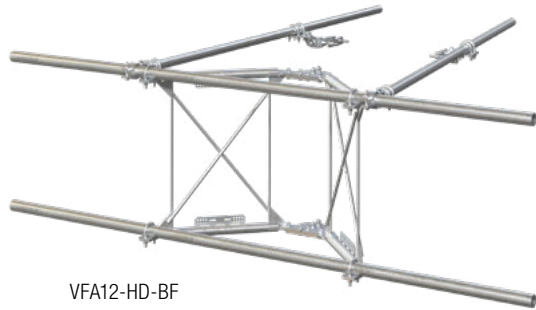
RMVD8

- 8' Double T-arm kit
- Monopole mounting range: 12" - 45"
- Specify RM-ADK for monopoles from 45" - 60"
- Includes 2-3/8" antenna mounting pipes
- Contact us for detailed loading and engineering information

CEQ#	OEM P/N	Classification	Description	Antenna Pipe (QTY) & Size	Weight
ANT.54511	RMVD8-296-18	M1800R(2000)-3[6]	8' 3-Sided T-Arm Mount with 18" Standoff	(9) 2-3/8" x 96" SCH 40	1,881 lb
ANT.545.12	RMVD8-2120-18	M1800R(2000)-3[6]	8' 3-Sided T-Arm Mount with 18" Standoff	(9) 2-3/8" x 120" SCH 40	1,937 lb
ANT.55979	RM-ADK		Large Pole Adapter (Two needed for 45" - 60" Monopoles)		106 lb

AT&T Approved Sector Frames for Monopoles

Bare Frame Version Provided without Tower Attachment



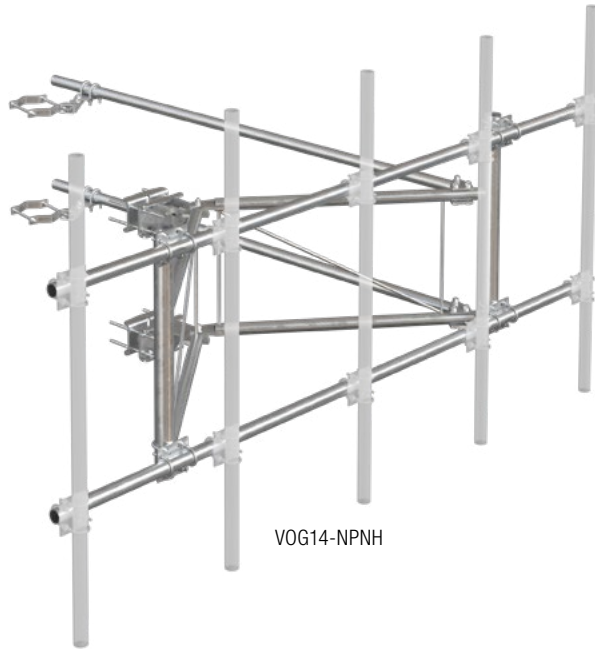
Description

- Bare sector frame version for monopole or tower applications
- BCAM™ can be purchased separately if needed for tower applications
- MDFCC can be purchased separately if needed for monopole applications
- Mounting pipes and crossovers ordered separately
- Features our Quick-Plate™ for easy grounding and addition of RRU mounting pipes or Unistrut
- Round-member face offers lower wind resistance
- Frames rotate for easy azimuth adjustment
- Monopole mounting range: 12" - 45"
- Specify RM-ADK for monopoles from 45" - 60"
- Contact us for detailed loading and engineering information

CEQ#	OEM P/N	Classification	Description	Antenna Pipe (QTY) & Size	Weight
ANT.55994	VFA10-HDS-BF	M1300R(2000)-4[6]	10' Sector Frame with Single Tie-Back (No Pipe/Hardware/Monopole Bracket)	Order Separately	403 lb
ANT.56012	VFA10-HD-BF	M1500R(2000)-4[6]	10' Sector Frame with Dual Tie-Back (No Pipe/Hardware/Monopole Bracket)	Order Separately	490 lb
ANT.55966	VFA12-HDS-BF	M1300R(2000)-4[6]	12' Sector Frame with Single Tie-Back (No Pipe/Hardware/Monopole Bracket)	Order Separately	438 lb
ANT.55991	VFA12-HD-BF	M1500R(2000)-4[6]	12' Sector Frame with Dual Tie-Back (No Pipe/Hardware/Monopole Bracket)	Order Separately	515 lb
ANT.55988	VFA14-HD-BF	M1300R(2000)-4[6]	14' Sector Frame with Dual Tie-Back (No Pipe/Hardware/Monopole Bracket)	Order Separately	535 lb
ANT.55972	VFA14-HD80-BF	M1500R(2000)-4[6]	14' SCH 80 Sector Frame with Dual Tie-Back (No Pipe/Hardware/Monopole Bracket)	Order Separately	600 lb
ANT.55986	MDFCC		Monopole Direct Attachment Kit, Three Sector Frames		634 lb
CEQ.53317	SCX2-K		Crossover kits for 2-3/8" OD Mounting Pipes (Two per Pipe)		9 lb
ANT.55975	SCX23-K		Crossover kits for 2-7/8" OD Mounting Pipes (Two per Pipe)		9 lb
ANT.55983	P296		2-3/8" x 96" SCH 40 Mounting Pipe		30 lb
ANT.55993	P2120		2-3/8" x 120" SCH 40 Mounting Pipe		37 lb
ANT.55985	P3096		2-7/8" x 96" SCH 40 Mounting Pipe		47 lb
ANT.16008	P30120		2-7/8" x 120" SCH 40 Mounting Pipe		58 lb
ANT.55979	RM-ADK		Large Pole Adapter (Two needed for 45" - 60" Monopoles)		106 lb

AT&T Approved Sector Frame with Additional Standoff

14' Sector Frame with 5' Standoff



VOG14-NPNH

Description

- Increased 5' standoff to reduce PIM
- 14'-5" face width allows for horizontal clearance
- Attaches to round legs from 1-1/2" - 9-1/2" and angle legs from 3" - 6" (See BCAM-HDLL and BCAM-HDLL-AA on page 15 for more information)
- Mounting pipes and crossovers ordered separately
- Contact us for detailed loading and engineering information

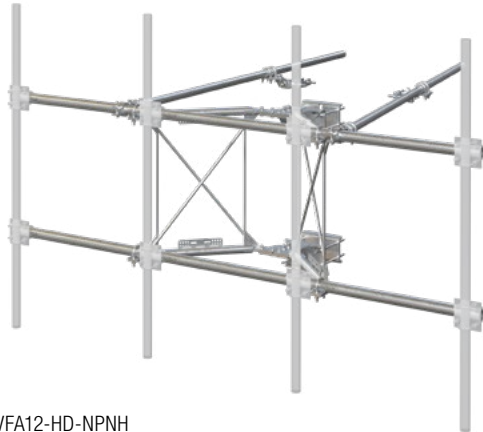


MSFAA

CEQ#	OEM P/N	Classification	Description	Antenna Pipe (QTY) & Size	Weight
ANT.55971	VOG14-NPNH	M1500R(1100)-5[6]	14' Sector Frame with 5' Standoff, Dual Tie-Backs (No Pipe/Hardware)	Order Separately	915 lb
CEQ.53317	SCX2-K		Crossover Kits for 2-3/8" OD Mounting Pipes (Two per Pipe)	2-3/8"	9 lb
ANT.55975	SCX23-K		Crossover Kits for 2-3/8" OD Mounting Pipes (Two per Pipe)	2-7/8"	9 lb
ANT.55983	P296		2-3/8" x 96" SCH 40 Mounting Pipe		30 lb
ANT.55993	P2120		2-3/8" x 120" SCH 40 Mounting Pipe		37 lb
ANT.55985	P3096		2-7/8" x 96" SCH 40 Mounting Pipe		47 lb
ANT.16008	P30120		2-7/8" x 120" SCH 40 Mounting Pipe		58 lb
ANT.55965	MSFAA		Monopole Sector Frame Attachment for Tower Sector Frames		789 lb

AT&T Approved Sector Frames

Sector Frames for Towers and Monopoles



VFA12-HD-NPNH



MSFAA

Description

- Guyed and SST applications feature our BCAM™ Taper Adjustment System
- Features our Quick-Plate™ for easy grounding and addition of RRU mounting pipes or Unistrut
- Round-member face offers lower wind resistance
- Frames rotate for easy azimuth adjustment
- Guyed and SST mounting range: 1-1/2" - 9-1/2" round legs and 3" - 6" angles
- Compatible with BCAM-HDLL and BCAM-HDLL-AA (See BCAM-HDLL and BCAM-HDLL-AA on page 15 for more information on large round and angle adapters)
- Monopole mounting range: 12" - 45"
- Mounting pipes and crossovers ordered separately
- Contact us for detailed loading and engineering information

CEQ#	OEM P/N	Classification	Description	Antenna Pipe (QTY) & Size	Weight
ANT.55969	VFA10-HDS-NPNH	M1300R(2000)-4[6]	10' Sector Frame with Single Tie-Back (No Pipe/Hardware)	Order Separately	551 lb
ANT.55984	VFA10-HD-NPNH	M1500R(2000)-4[6]	10' Sector Frame with Dual Tie-Back (No Pipe/Hardware)	Order Separately	637 lb
ANT.55981	VFA12-HDS-NPNH	M1300R(2000)-4[6]	12' Sector Frame with Single Tie-Back (No Pipe/Hardware)	Order Separately	575 lb
ANT.55995	VFA12-HD-NPNH	M1500R(2000)-4[6]	12' Sector Frame with Dual Tie-Back (No Pipe/Hardware)	Order Separately	662 lb
ANT.56004	VFA14-HD-NPNH	M1300R(2000)-4[6]	14' Sector Frame with Dual Tie-Back (No Pipe/Hardware)	Order Separately	679 lb
ANT.56002	VFA14-HD80-NPNH	M1500R(2000)-4[6]	14' SCH 80 Sector Frame with Dual Tie-Back (No Pipe/Hardware)	Order Separately	747 lb
CEQ.53317	SCX2-K		Crossover Kits for 2-3/8" OD Mounting Pipes (Two per Pipe)	2-3/8"	9 lb
ANT.55975	SCX23-K		Crossover Kits for 2-3/8" OD Mounting Pipes (Two per Pipe)	2-7/8"	9 lb
ANT.55983	P296		2-3/8" x 96" SCH 40 Mounting Pipe		30 lb
ANT.55993	P2120		2-3/8" x 120" SCH 40 Mounting Pipe		37 lb
ANT.55985	P3096		2-7/8" x 96" SCH 40 Mounting Pipe		47 lb
ANT.16008	P30120		2-7/8" x 120" SCH 40 Mounting Pipe		58 lb
ANT.55965	MSFAA		Monopole Sector Frame Attachment for Tower Sector Frames		789 lb

AT&T Approved Sector Frames

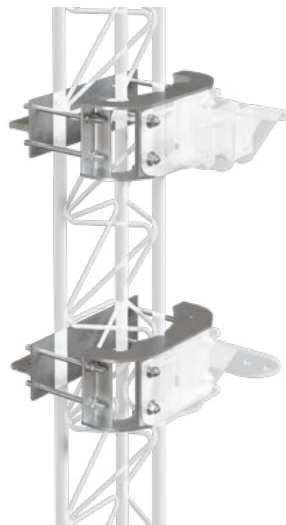
Heavy 10 and Heavy WLL Large Leg Adapters



BCAM-HDLL



BCAM-HDLL-AA



BCAM-HD

Description

BCAM-HDLL

- Attaches up to 16" round legs
- Attaches to #12 truss leg (12" center to center)

BCAM-HDLL-AA

- Attaches to 7" - 12" 90° angle legs
- Attaches to #12 truss leg (12" center to center)

BCAM-HD

- Easily adjust the taper of a fully loaded frame while mounted to the tower with a battery operated impact gun by tightening or loosening one nut
- Attaches to round members from 1-1/2" - 9-1/2" and from 3" - 6" angle members
- Infinitely adjustable from -2.5 - 6°
- To be used with VFA-BF that are provided without mounting bracket

CEQ#	OEM P/N	Description	Weight
ANT.54763	BCAM-HDLL	Large-Leg Adapter Kit, up to 16" Round Legs or #12 Truss Legs	130 lb
ANT.54760	BCAM-HDLL-AA	Large-Leg Adapter Kit, 7" - 12" 90° Angle Legs or #12 Truss Legs	131 lb
Pending	BCAM-HD	Heavy-Duty Tower Connection for Sector Frames	145 lb

AT&T Approved Pipe Mounts

R6 Heavy-Duty Universal Pipe Mount Kit



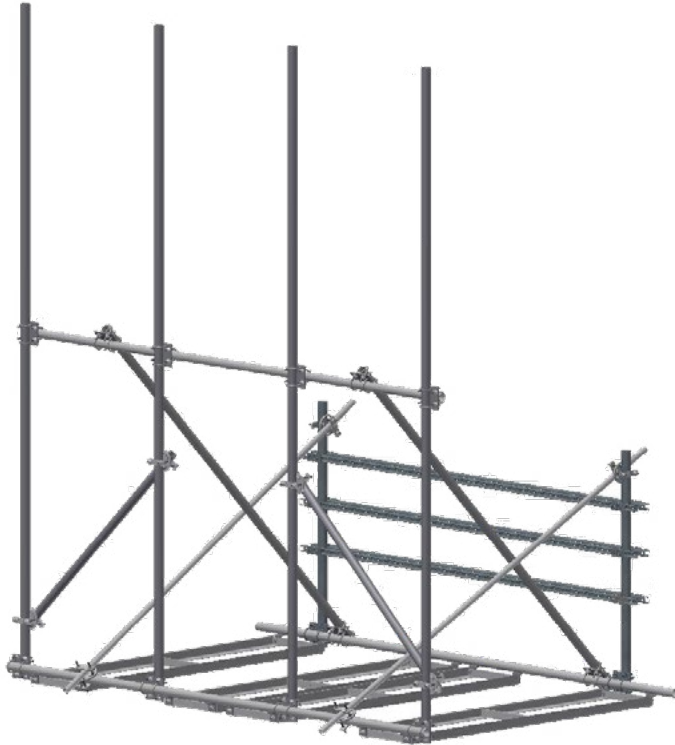
Description

- Heavy-duty sliding brackets for difficult tower attachments
- Includes 4-1/2" x 72" antenna mounting pipe
- Easy-adjustment taper up to 5.7° (based on 30" spacing of brackets)
- Fits round leg sizes 1-1/2" - 9-1/2" diameter and angle sizes 3" - 6"
- With BCAM-HDLL fits up to 16" round legs or #12 truss legs
- With BCAM-HDLL-AA fits up to 12" 90° angle legs or #12 truss legs
- Contact us for detailed loading and engineering information

CEQ#	OEM P/N	Description	Pipe size	Weight
ANT.54762	R6	Heavy-Duty Universal Pipe Mount Kit	4-1/2" x 72" SCH 40	265 lb
ANT.54763	BCAM-HDLL	Large-Leg Adapter Kit, up to 16" Round Legs or #12 Truss Legs		130 lb
ANT.54760	BCAM-HDLL-AA	Large-Leg Adapter Kit, 7" - 12" 90° Angle Legs or #12 Truss Legs		131 lb

AT&T Approved PIM Reducing Rooftop Mount

Non-Penetrating Rooftop Frame with RRU Mount



RTP12-3RRU

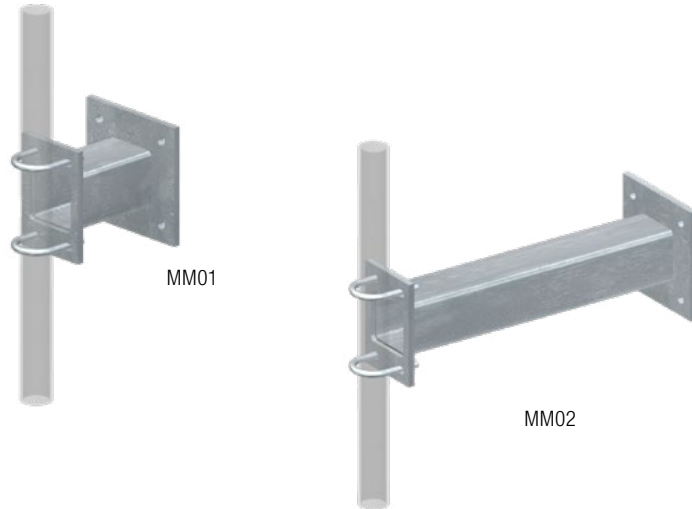
Description

- Similar to the non-penetrating rooftop pipe frames, but include a rear RRU mounting frame
- Standard kits include four 2-3/8" x 174" antenna mounting pipes
- If using other size antenna mounting pipes, purchase SCX7-U universal crossover plate kits
- Welded trays for easy assembly
- Purchase rubber mats separately
- Includes 2-3/8" antenna mounting pipes
- Contact us for detailed loading and engineering information

CEQ#	OEM P/N	Face Width	Mounting Pipes	Footprint	Mats Required	Description	Weight
CEQ.53343	RTP10-3RRU	10'-6"	(4) 2-3/8" x 174" SCH 40	92" x 126"	6	10' Non-Penetrating Rooftop Sled Frame with Back PIM RRU Rack	1,050 lb
CEQ.47545	RTP12-3RRU	12'-6"	(4) 2-3/8" x 174" SCH 40	92" x 150"	8	12' Non-Penetrating Rooftop Frame with RRU Mount	1,150 lb
CEQ.53333	RTP14-3RRU	14'-6"	(4) 2-3/8" x 174" SCH 40	92" x 174"	12	14' Non-Penetrating Rooftop Sled Frame with Back PIM RRU Rack	1,376 lb

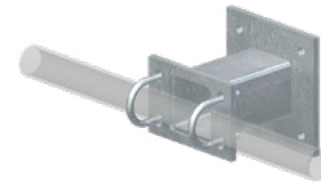
AT&T Approved Wall Mounts and Standoff Mounts

Standoff Arm Kits for Single Antenna



Description

- Versatile 8", 24", or 36" standoff arms
- Accept 2-3/8", 2-7/8", or 3-1/2" pipes vertically or horizontally
- Fit our standard or lightweight ring mounts
- Include attachment hardware
- Mounting plate is 1/2" thick by 8-1/2" square with four 11/16" holes on 6" centers
- Standoff is 4" x 3/16" square tube
- Mounting pipes ordered separately
- Contact us for detailed loading and engineering information

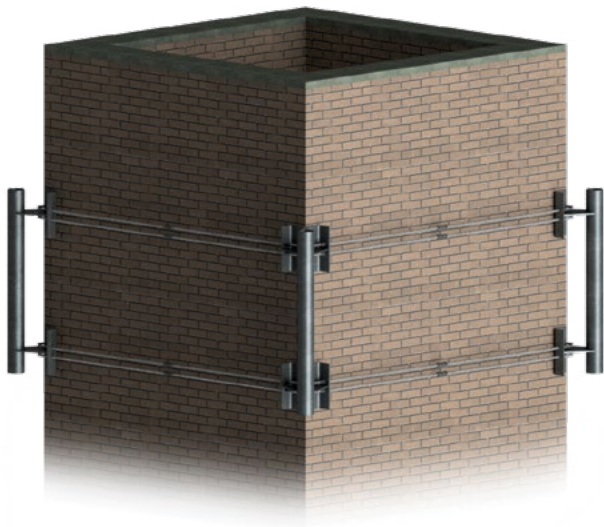


These arms can also be used to support a horizontal pipe for attachment of multiple antenna pipes

CEQ#	OEM P/N	Description	Weight
ANT.55231	MM01	8" Support Arm	37 lb
ANT.55230	MM02	24" Support Arm	51 lb
ANT.55232	MM03	36" Support Arm	62 lb
MIC.11440	LWRM	High Capacity 3-Sector Ring Mount	265 lb

AT&T Square Chimney Mount Kits

Square Chimney Mount Kits



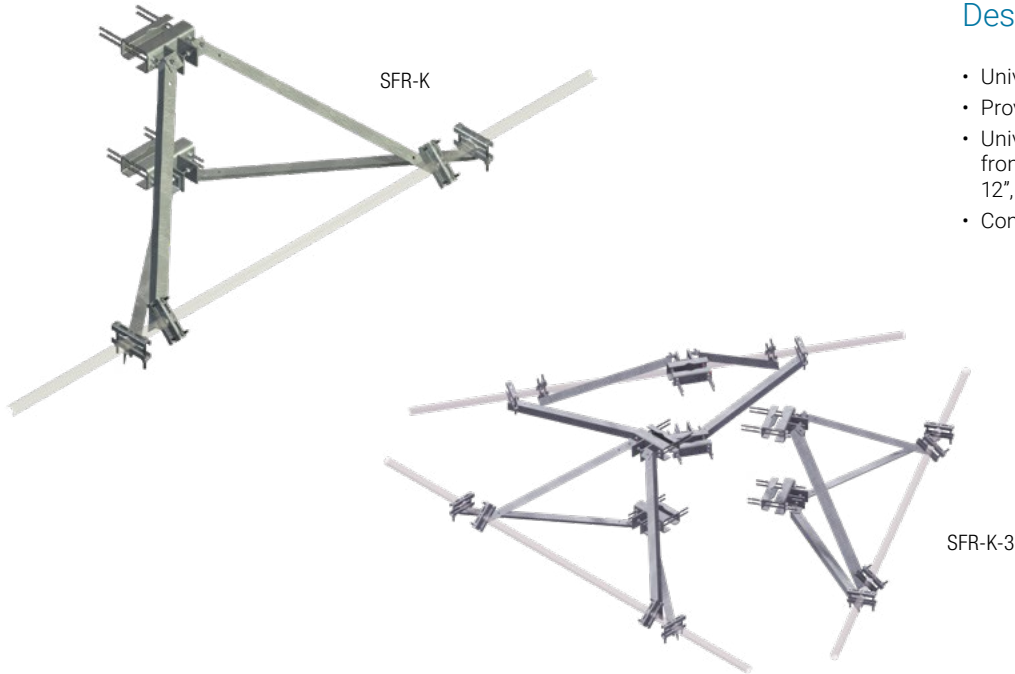
Description

- Standard kits fit chimneys with face dimensions from 3' - 8"
- Kits include corner brackets with 4-1/2" diameter by 48" mounting pipes and threaded rod tensioning system

CEQ#	OEM P/N	Chimney Face	Description	Weight
ANT.56476	SCM34	3' - 4'	Square Chimney Mount	470 lb
ANT.56475	SCM48	4' - 8'	Square Chimney Mount	545 lb

AT&T Approved Reinforcement Kits

Tower Mount Reinforcements



Description

- Universal design provides extra capacity to existing sector frames for mounting RRU's
- Provides vertical and/or horizontal reinforcement (See table for capacity information)
- Universal mounting; round legs from 1" - 8", 60° angle legs from 1-1/2" - 8", and 90° angle legs from 1-1/2" - 6", large-leg adapter kit available for round legs up to 12-3/4", 60° angle legs up to 12", and 90° angles up to 8-1/2"
- Contact us for detailed loading and engineering information

CEQ#	OEM P/N	Sectors	Description	Load Increase Per Sector (Normal/Tangential/Dead) lb	Weight
ANT.16456	SFR-K	1	24" - 36" Frame Standoff Reinforcement	1200 / 400 / 1500	132 lb
ANT.16821	SFR-K-3	3	24" - 36" Frame Standoff Reinforcement	1200 / 400 / 1500	396 lb
ANT.16458	SFR-K-L	1	36" - 48" Frame Standoff Reinforcement	1200 / 400 / 1500	154 lb
ANT.16822	SFR-K-L- 3	3	36" - 48" Frame Standoff Reinforcement	1200 / 400 / 1500	462 lb
ANT.16460	SFS-H	1	24" - 36" Horizontal Sector Frame Stabilizer	1050 / 300 / 0	66 lb
ANT.16461	SFS-V	1	24" - 36" Vertical Sector Frame Stabilizer	0 / 300 / 1500	66 lb
CEQ.53324	SFS-H-L	1	36" - 48" Horizontal Sector Frame Stabilizer	1050 / 300 / 0	77 lb
CEQ.53329	SFS-V-L	1	36" - 48" Vertical Sector Frame Stabilizer	0 / 300 / 1500	77 lb
ANT.16459	TAM-LL	---	Large Leg Kit 12-3/4" OD & 8-1/2" Angle Legs	---	45 lb

AT&T Approved Reinforcement Kits

Sector Frame Reinforcements



Description

- Provides additional support to existing sector frames
- Pipe bracing for reduced wind area
- Fits 2-3/8" to 2-7/8" OD crossarms
- Universal mounting; round legs from 1" - 8", 60° angle legs from 1-1/2" to 8", and 90° angles 1-1/2" - 6"
- Large-leg adapter kit available for round legs up to 12-3/4", 60° angle legs up to 12", and 90° angles up to 8-1/2"
- Contact us for detailed loading and engineering information



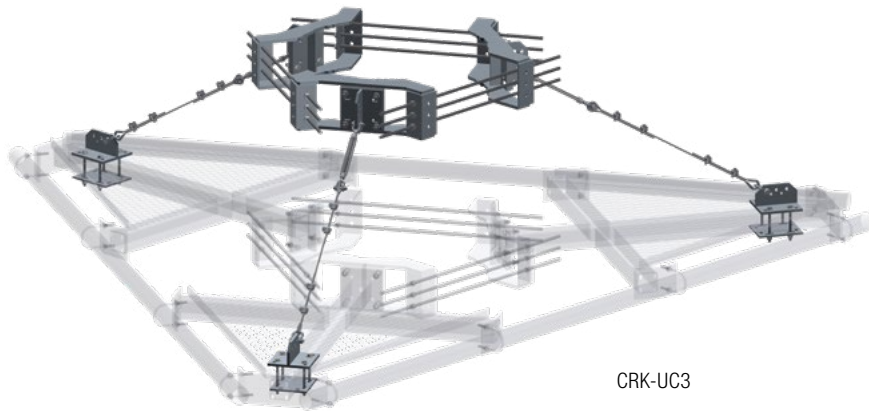
CEQ#	OEM P/N	Description	Load Increase Per Sector (Normal/Tangential/Dead) lb	Weight
CEQ.53331	VSK-TH	Pipe Sector Frame Horizontal Reinforcement	1050/300/0	99 lb
CEQ.53319	VSK-TH-L	Long Pipe Sector Frame Horizontal Reinforcement	1050/300/0	119 lb
CEQ.53321	VSK-TV	Pipe Sector Frame Vertical Reinforcement	0/300/1500	99 lb
CEQ.53328	VSK-TV-L	Long Pipe Sector Frame Vertical Reinforcement	0/300/1500	119 lb
CEQ.53338	VSK-SFR	Pipe Sector Frame Horizontal and Vertical Reinforcement	1200/400/1500	197 lb
CEQ.53339	VSK-SFR-L	Long Pipe Sector Frame Horizontal and Vertical Reinforcement	1200/400/1500	237 lb
ANT.16459	TAM-LL	Large Leg Kit 12-3/4" OD & 8-1/2" Angle Legs	---	45 lb

AT&T Approved Reinforcement Kits

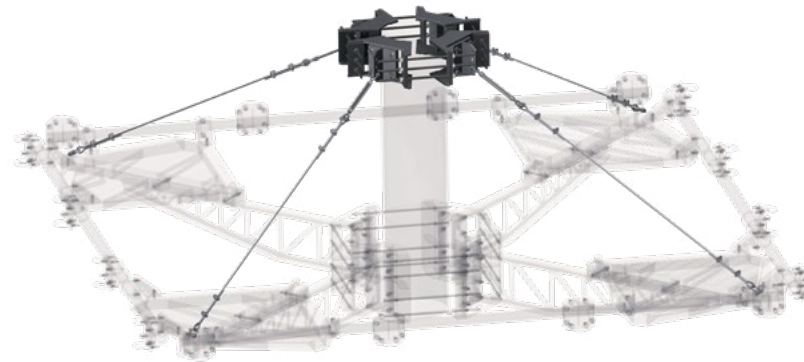
Cable Platform Reinforcement Kits

Description

- Cable reinforcement kits provide additional capacity for Fortress™ or other monopole platforms
- Extremely low EPA
- Clamp ring mounts a minimum of 48" above the platform
- 5/16" galvanized aircraft cable
- Universal kit attaching hardware fits up to 4" square tube or round support arms
- Attach to the platform with 5/16" shackles
- CRK-DC3 and CRK-UC3 fit round or polygon poles from 12" - 45" diameter or up to 60" with the addition of the RM-ADK large pole adapter kit
- CRK-DC4 and CRK-UC4 fit round or polygon poles from 12" - 60" diameter



CRK-UC3



CRK-DC4

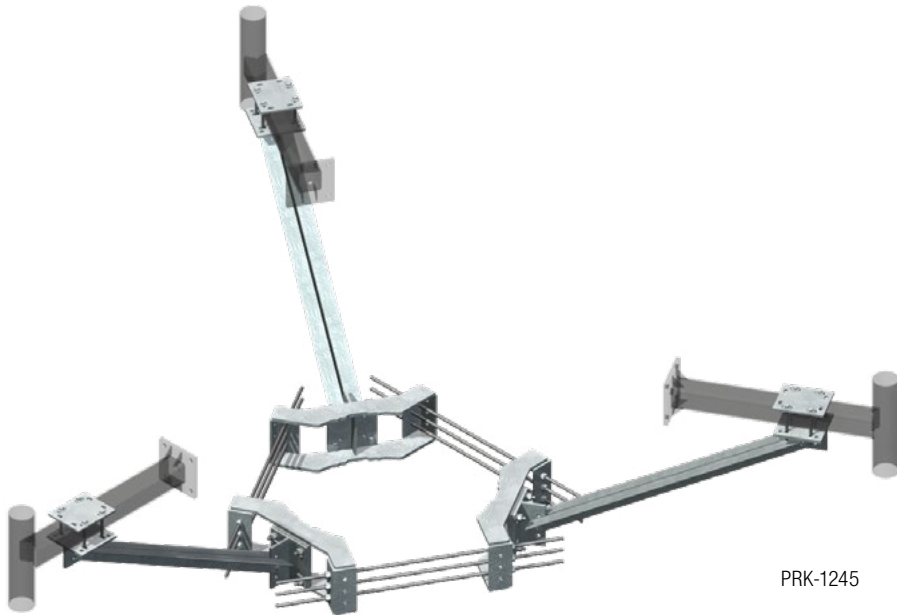
CEQ#	OEM P/N	Platform Style	Description	Pole Diameter	Horizontal Connection	Weight
ANT.46145	CRK-DC3	Fortress F3P	F3P Heavy WLL to Reinforced WLL	12" - 45"	4" x 4" Max	349 lb
ANT.46135	CRK-DC4	Fortress F4P	F4P Heavy 10 Reinforcement	12" - 60"	4" x 4" Max	409 lb
ANT.51652	CRK-UC3	Universal	Universal Cable Reinforcement Kit for 3-Sector Platforms or T-Arms, Attaches up to 4" Round or Square Members	12" - 45"	4" x 4" Max	415 lb
ANT.51658	CRK-UC4	Universal	Universal Cable Reinforcement Kit for 4-Sector Platforms or T-Arms, Attaches up to 4" Round or Square Members	12" - 60"	4" x 4" Max	497 lb

AT&T Approved Reinforcement Kits

Monopole Mount Platform and T-Arm Reinforcements

Description

- Easy bolt-on reinforcement kits include ring mount and support arms to reinforce existing platforms or t-arms when increased dead load is required (multiple RRU's)
- Fits round or polygon poles from 12" - 45" diameter, or up to 60" with the addition of the RM-ADK large pole adapter kit
- The maximum additional vertical load capacity gained is 4,000 lb per sector arm (12,000 lb total)
- PRK-1245, PRK-1245L, and PRK-NA hardware kits fit up to 4" round or square tube standoff arms
- PRK-1245LW hardware kit fits up to 6" round or square tube standoff arms
- PRK-HD hardware kit fits up to 5" round or square tube standoff arms
- Contact us for detailed loading and engineering information



PRK-1245

CEQ#	OEM P/N	Description	Load Increase lb (Dead)	Weight
ANT.16462	PRK-1245	12' Platform Reinforcement (3-Sided)	4000 per sector	470 lb
ANT.16463	PRK-1245L	14' Platform Reinforcement (3-Sided)	4000 per sector	518 lb
ANT.16464	PRK-NA	Reinforcement Hardware Kit (Angle Sold Separately)	---	381 lb
ANT.16465	PQ-1245	12' Platform Reinforcement (4-Sided)	3000 per sector	605 lb
ANT.16466	PQ-1245L	14' Platform Reinforcement (4-Sided)	3000 per sector	677 lb
ANT.55979	RM-ADK	Large Pole Adapter (Two Needed for 45" - 60" Monopoles)	---	106 lb

AT&T Approved Reinforcement Kits

Tower Platform and T-Arm Reinforcements

Description

- Universal design provides extra capacity to tower platforms or standoff arms
- Provides vertical reinforcement only
- Fits round legs 1-1/2" - 4-1/2" OD, 60° angle legs from 1-1/2" - 4-1/2", and 90° angle legs from 1-1/2" - 3"
- Fits round or square tube standoff arms 1-1/2" - 5"
- Uses (3) PRK-FMA1 for tower platform reinforcement



CEQ#	OEM P/N	Description	Sectors	Horizontal Connection	Angle Size	Weight
ANT.54744	PRK-FMA1	Single-Arm Standoff Reinforcement Kit	1	5" x 5" Max	2L 2-1/2" x 2-1/2" x 3/16" x 84"	110 lb

AT&T Approved Reinforcement Kits

Monopole Support Rail and T-Arm Reinforcement Kits



HSRK-35

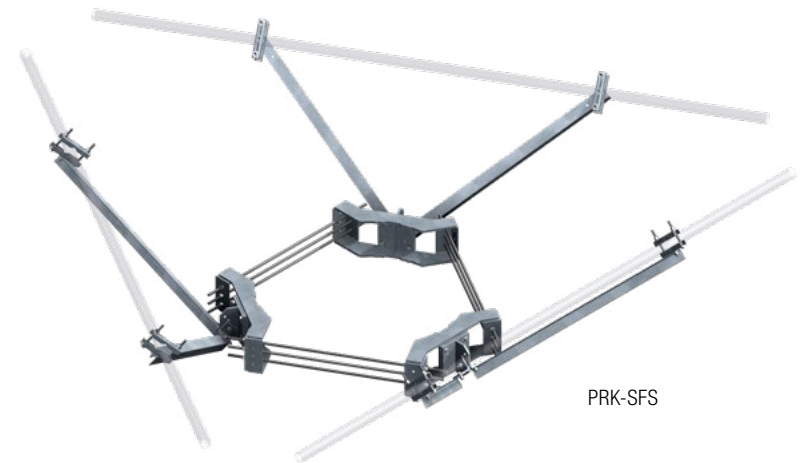
Description

HSRK-35

- Provide extra rigidity for existing platform handrails
- Angle size L 3" x 3" x 1/4" x 96"
- Bracing attaches to platform standoff arms
- HSRK-35 hardware fits up to 5" round or square tube standoff arms
- Handrail attachment hardware fits pipe handrails up to 3-1/2" OD
- Kit installation requires field cutting and drilling

PRK-SFS and PRK-SFS-L

- Reinforcement kit for handrail
- Angle size L 2-1/2" x 2-1/2" x 3/16" x 52-1/2"
- Provides extra rigidity
- For new or existing platform support rails and t-arms
- Reinforcement kits can be installed to support t-arms and platform support rails from above or below
- PRK-SFS and PRK-SFS-L fit round or polygon poles from 12" - 45" diameter or up to 60" diameter with the addition of the RM-ADK large pole adapter kit
- T-arm and support rail connection hardware fits round members 1" - 3-1/2" OD



PRK-SFS

CEQ#	OEM P/N	Description	Weight
ANT.51655	HSRK-35	Support Rail Bracing Kit	142 lb
ANT.16817	PRK-SFS	T-Arm and Support Rail Reinforcement Kit	575 lb
ANT.16818	PRK-SFS-L	Long Angle T-Arm and Support Rail Reinforcement Kit	645 lb

AT&T Approved Sector Frames

10' and 12' Tie-Backs



SPTB

Description

SPTB/SPTB278

- Universal sector frame attachment hardware fits 1-1/2" - 5" OD
- Leg bracket fits round legs from 1-1/2" - 8-5/8" OD, 60° angle legs up to 8", and 90° angle legs up to 6"

STK-U

- Universal sector frame attachment hardware fits 2-3/8" pipe
- Leg bracket fits round legs from 1" - 6" OD, 60° angle legs up to 6", and 90° angle legs up to 4"



STK-U

CEQ#	OEM P/N	Description	Pipe Size	Length	Weight
ANT.51650	SPTB	Sliding Pipe Tie-Back Assembly, 2-3/8" SCH 40 x 126"	2-3/8" x 10'-6"	126"	89 lb
ANT.55962	SPTB278	Sliding Pipe Tie-Back Assembly, 2-7/8" SCH 40 x 126"	2-7/8" x 10'-6"	126"	113 lb
ANT.54754	STK-U	Universal Sector Frame Stiff Arm Kit, 2-3/8" SCH 40 x 150"	2-3/8" x 12'-6"	150"	65 lb

AT&T Approved Tower Mounts

Stand-Off Frames



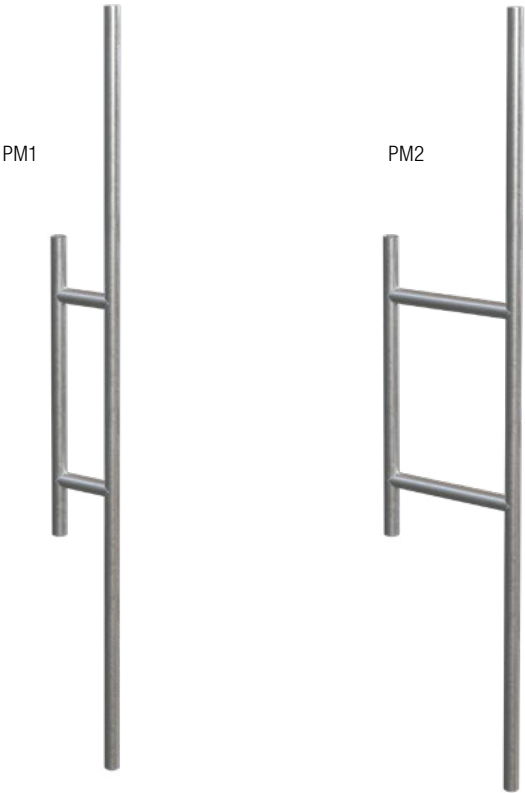
Description

- Stand-off frames with 3-1/2" OD x 56-1/2" vertical mast
- Easily adjust for taper up to 6° in 3/4° increments
- Universal mounting; round legs from 1" - 8", 60° angle legs from 1-1/2" - 8", and 90° angles 1-1/2" - 6"
- Contact us for detailed loading and engineering information

CEQ#	OEM P/N	Standoff	Weight
ANT.55114	USF-2U	24"	129 lb
ANT.55118	USF-3U	36"	146 lb
ANT.55116	USF-4U	45"	165 lb

AT&T Approved Tower Mounts

Panel Antenna Stand-Off Mounts



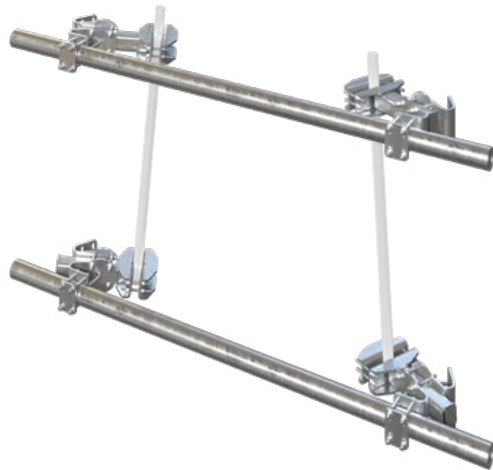
Description

- Versatile mounts works on towers, monopoles, and buildings
- One-piece welded design
- Constructed from 2-3/8" OD schedule 40 pipe
- Hot-dip galvanized
- Purchase mounting hardware separately

CEQ#	OEM P/N	Stand-Off	Antenna Pipe	Mounting Pipe	Weight
ANT.55115	PM1	1'	120"	48"	60 lb
ANT.55117	PM2	2'	120"	48"	68 lb

AT&T Approved Pipe Mounts

Universal Face Pipe Mount Assemblies



FACE-ASY1



FACE-PM

Description

- Universal mounts designed for the most difficult face mount applications
- Easily adjustable taper up to 8° (based on 60" spacing of brackets)
- Attach to 1-1/2" - 9-1/2" round members or 3" - 6" angles
- Contact us for detailed loading and engineering information

CEQ#	OEM P/N	Sectors	Face Pipes	Weight
ANT.54768	FACE-ASY1-30126	One	(2) 2-7/8" x 10'-6" SCH 40	660 lb
ANT.54745	FACE-ASY1-3126	One	(2) 3-1/2" x 10'-6" SCH 40	690 lb
ANT.54765	FACE-ASY1-4126	One	(2) 4-1/2" x 10'-6" SCH 40	755 lb
ANT.54747	FACE-PM	Double Pipe to Pipe Crossover Kit, 1-1/2" - 4-1/2" Crossovers		52 lb

AT&T Approved RRU Mounts to Reduce PIM

Monopole RRU Mounts



UGLM-DCP



6CHMT

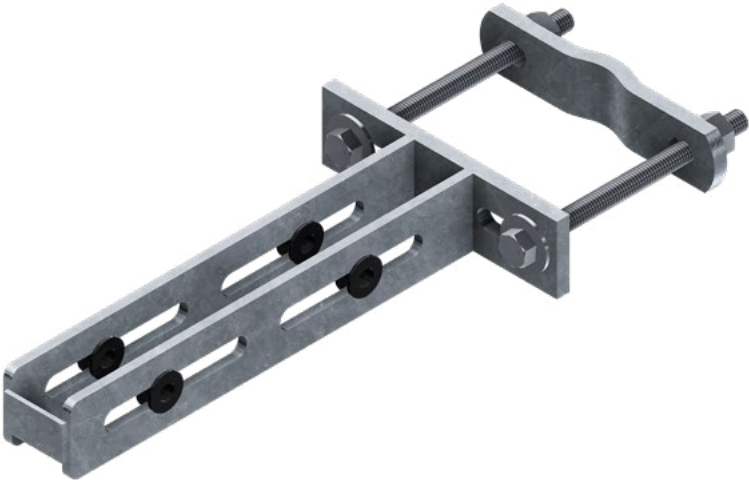
Description

- Reduce PIM by increasing separation between radios and antennas
- Designed to stay as close as possible to the monopole for reduced wind area
- Mounting pipes are ordered separately
- Contact us for detailed loading and engineering information

CEQ#	OEM P/N	Monopole Size Range	Description	Mounting Pipes	Weight (Without Pipes)
Crossover Connections					
ANT.46630	UGLM-DCP	10-1/2" - 28'	Mount up to 6 RRUs	Accepts 1-1/2" - 4-1/2" SCH 40 OD Mounting Pipes (Order Separately)	113 lb
ANT.46628	6CHMT	17-1/2" - 56"	Six Sector Monopole Attachment	Accepts 2-3/8" or 2-7/8" SCH 40 Mounting Pipes (Six Required, Order Separately)	272 lb
Standard Antenna Mast					
CEQ#	OEM P/N	Description		Antenna Pipe (QTY) & Size	Weight
ANT.16007	P2126	Antenna Mast		2-3/8" x 126" SCH 40	40 lb
ANT.16008	P30120	Antenna Mast		2-7/8" x 120" SCH 40	61 lb

AT&T Approved PIM Mitigation

TMA Bracket



Description



- Use for mounting tower mounted amplifiers
- Includes universal mounting hardware for 2-3/8" - 4-1/2" OD legs
- Galvanized steel bracket with rubber grommets to avoid PIM issues with dissimilar metals

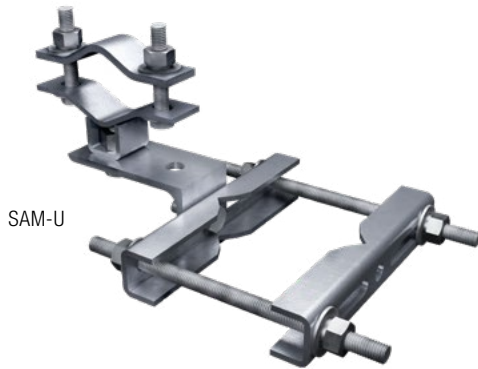
CEQ#	OEM P/N	Description	Weight
ANT.47480	PB-TMA-K	TMA Bracket	3 lb

AT&T Approved Mount Connections

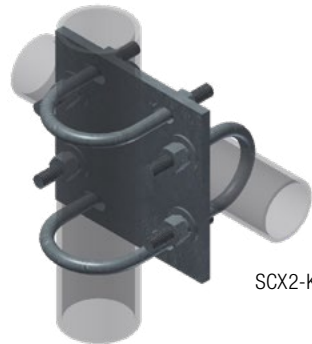
Crossover Connections and Pipe

Description

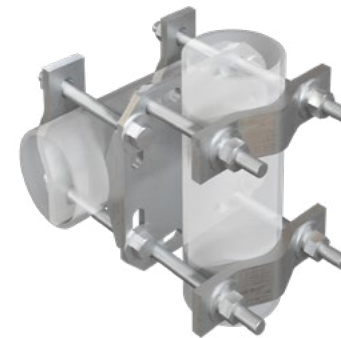
- Pipe to pipe or pipe to angle crossover kits



SAM-U



SCX2-K



FCX45-U

CEQ#	OEM P/N	Description	Weight
ANT.14750	SAM-U	Universal 2-3/8" Stiff Arm Attachment, Connect to 1" - 6" Round, 1" - 60° 60° Angles and 1" - 4" 90° Angles	9 lb
ANT.56006	FCX45-U	HD Universal, 2-3/8" - 4-1/2" Crossover	26 lb
ANT.56449	SCX3-FR-K	HD 2-3/8" or 2-7/8" - 2-3/8" or 2-7/8" Crossover	17 lb
CEQ.53317	SCX2-K	Crossover Kits for 2-3/8" OD Mounting Pipes (Two per Pipe)	9 lb
ANT.55975	SCX23-K	Crossover Kits for 2-3/8" OD Mounting Pipes (Two per Pipe)	9 lb
ANT.55975	SP219	3-1/2" - 2-3/8" Crossover	13 lb
ANT.55968	SP219-H	3-1/2" - 2-7/8" Crossover	13 lb
ANT.55983	P296	2-3/8" x 96" SCH 40 Mounting Pipe	30 lb
ANT.55993	P2120	2-3/8" x 120" SCH 40 Mounting Pipe	37 lb
ANT.55985	P3096	2-7/8" x 96" SCH 40 Mounting Pipe	47 lb
ANT.16008	P30120	2-7/8" x 120" SCH 40 Mounting Pipe	58 lb

AT&T Approved Cold Shrinks

Gamma Silicone Cold Shrink

Description

- Meets IP-68 standards against water migration
- High shrink ratio allows weather proof seal of different types of connectors regardless of shape or size without the use of additional spacers



CEQ#	OEM P/N	Connector	Description
CEQ.15438	SDL-DC-152	DC (Power)	Gamma Cold Shrink for RRU Power Connector with Power Cable
CEQ.15437	SDL-1A-125	7/16 DIN	Gamma Cold Shrink for 7/16 DIN or 4.3-10 Connector; Interfaces to 1/2" Coaxial Cables

For engineering information, you may request an account at SP1Data.com

If you need technical assistance or have questions on what to specify, please email our engineering team at SP1Engineering@Valmont.com

For quote requests, please email our team at SP1SalesGroup@valmont.com



A **valmont**  COMPANY

valmont 
TELECOM

© 2024 Valmont Telecommunications, Inc. All Rights Reserved.
Valmont and Site Pro 1 are registered trademarks of Valmont Industries, Inc.
V2.4 Latest Update 01/24